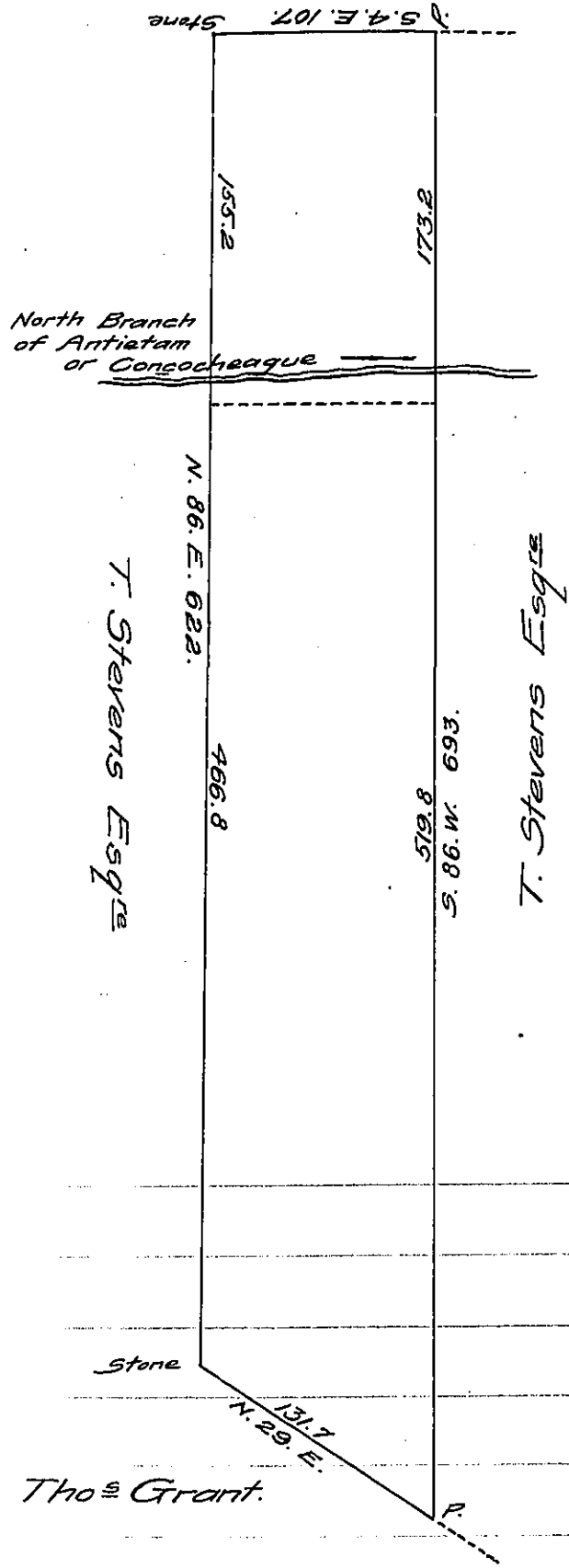


FORM NO 1.

Franklin County line



Warrant 17th October 1751, to Sebastian Graffe for 100^{ac} Joining or near the land granted him by Warr^t of this day on the North branch of Antietam Creek.

The whole of the above Tract is an Interference of a Tract of 414^{ac} & 127^{ps} and all^{es} Surveyed on Warrant granted to Adam Reigart for 400^{ac} dated 3^d March 1794. - Situate in Franklin Township Adams County now owned by Thaddeus Stevens Esq^{re} -

Witness my hand
October 4th 1838

Jn^o L. Grubernator

IN TESTIMONY that the above is a copy of the original remaining on file in the Department of Internal Affairs of Pennsylvania, made conformably to an Act of Assembly approved the 16th day of February, 1833, I have hereunto set my Hand and caused the Seal of said Department to be affixed at Harrisburg, this thirteenth day of November 1908.

Henry Howard
Secretary of Internal Affairs.